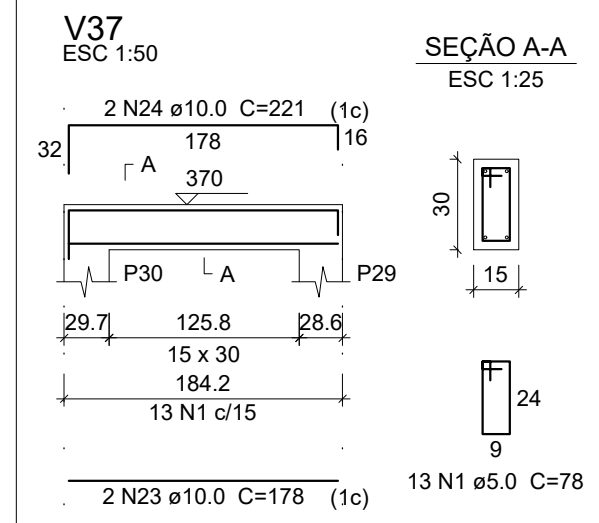
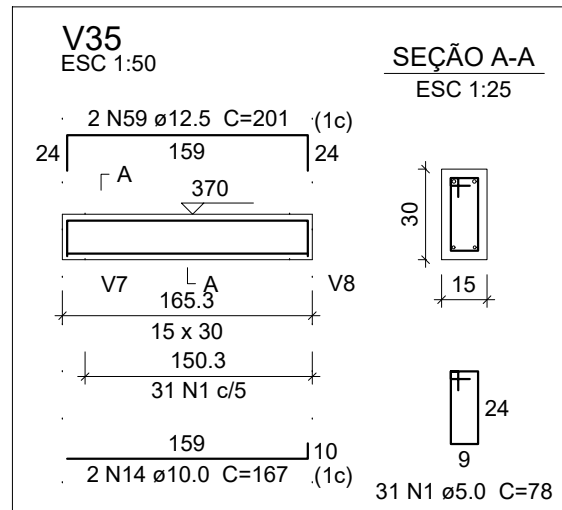
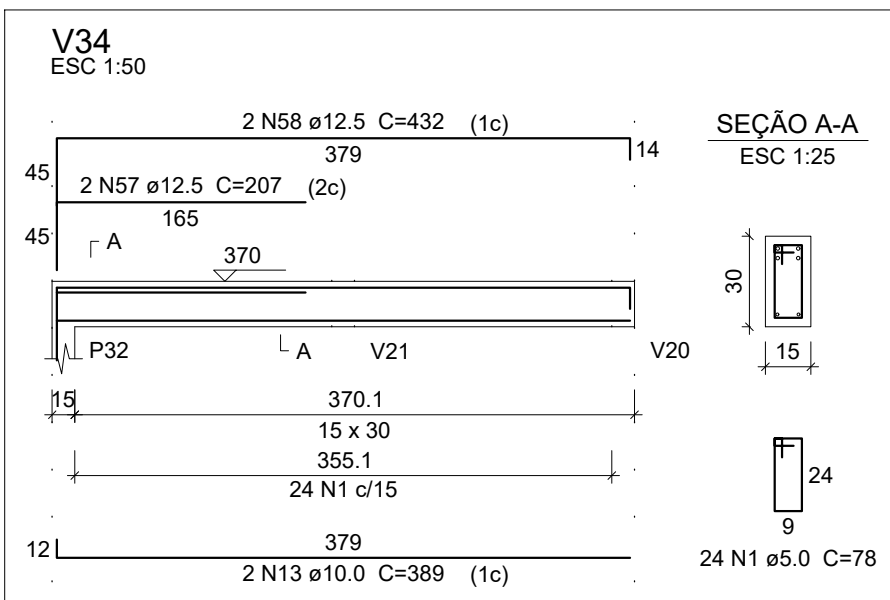
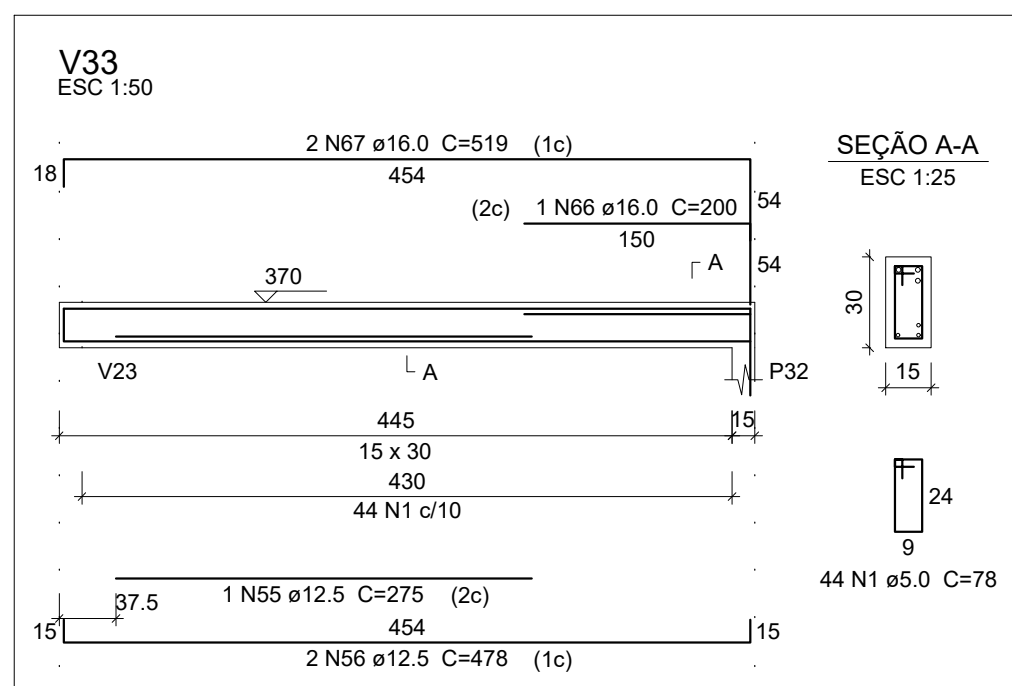
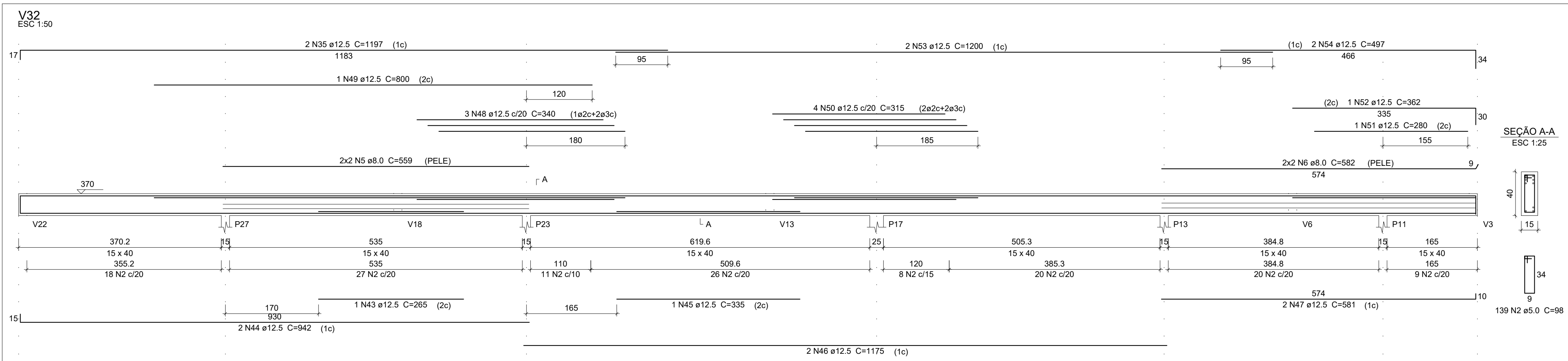
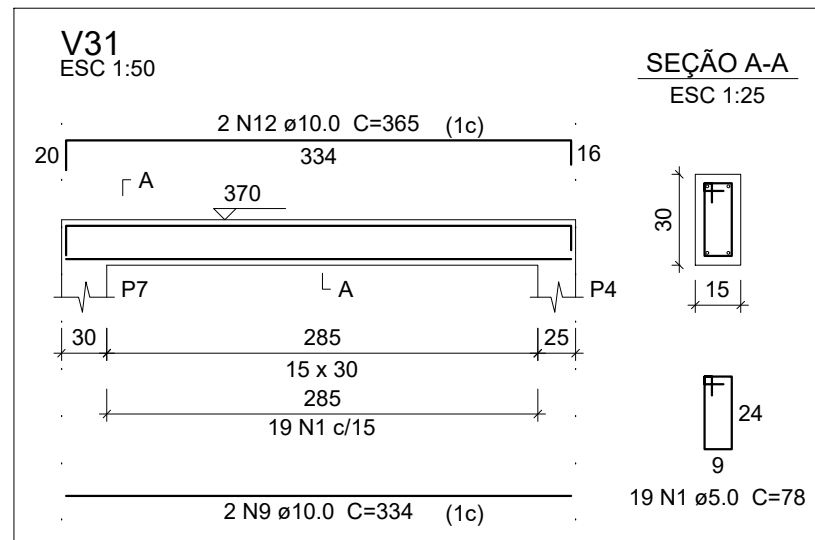
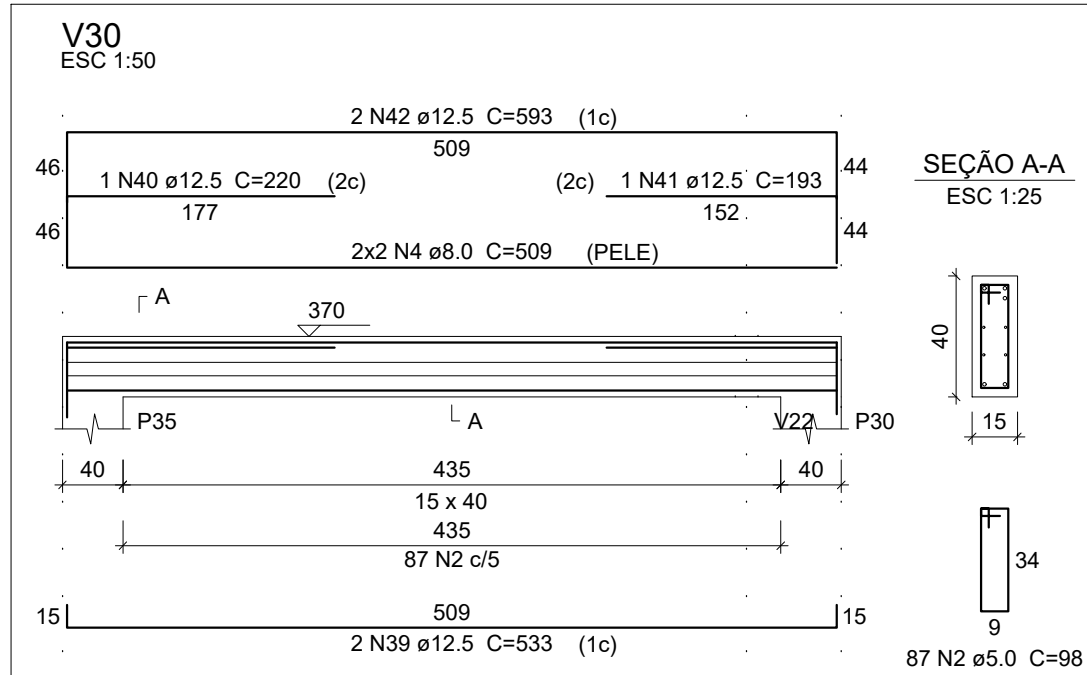
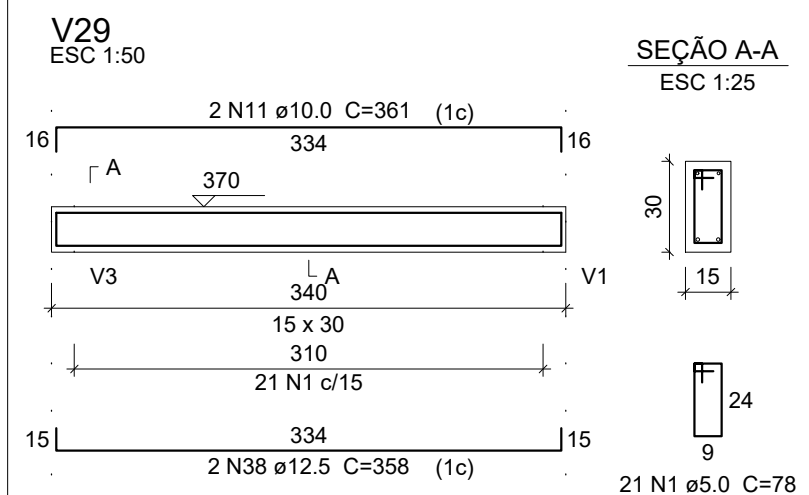
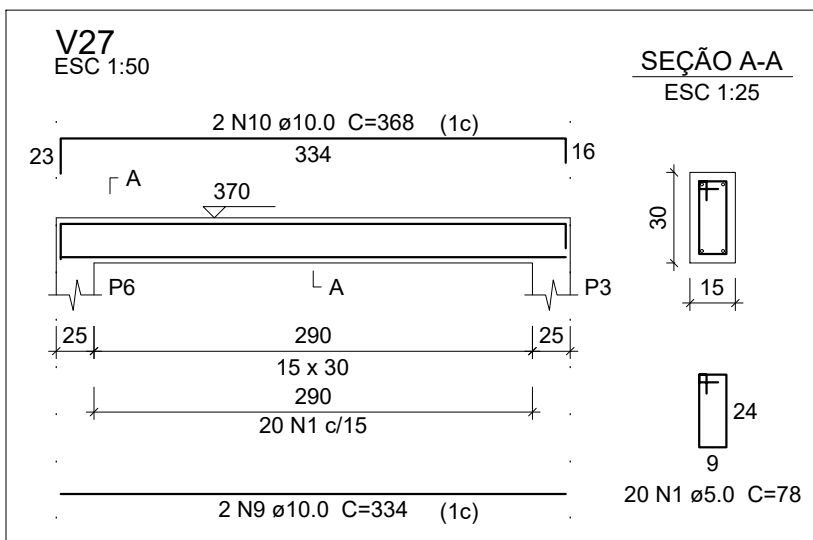
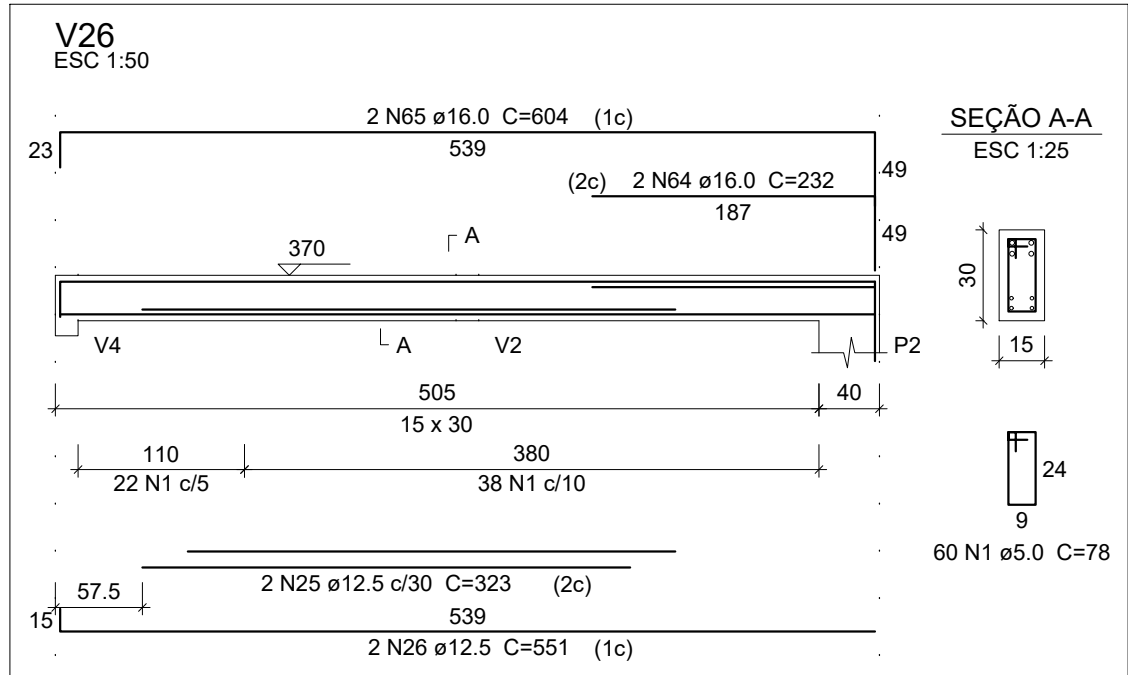


Relação do aço

ACO	N	DIAM (mm)	QUANT	C.UNIT (cm)	C.TOTAL (cm)
CA60	1	5.0	232	78	18096
CA50	2	5.0	589	98	57722
	3	8.0	4	409	1636
	4	8.0	4	509	2036
	5	8.0	4	559	2236
	6	8.0	4	582	2328
	7	8.0	4	534	2136
	8	8.0	4	512	2048
	9	10.0	4	334	1336
	10	10.0	2	368	736
	11	10.0	2	361	722
	12	10.0	2	365	730
	13	10.0	2	389	778
	14	10.0	2	167	334
	15	10.0	2	815	1630
	16	10.0	1	210	210
	17	10.0	2	375	750
	18	10.0	2	1187	2374
	19	10.0	1	270	270
	20	10.0	2	925	1850
	21	10.0	1	245	245
	22	10.0	2	492	984
	23	10.0	2	178	356
	24	10.0	2	221	442
	25	12.5	2	323	646
	26	12.5	2	551	1102
	27	12.5	2	719	1438
	28	12.5	2	890	1780
	29	12.5	2	348	696
	30	12.5	2	675	1350
	31	12.5	1	295	295
	32	12.5	6	320	1920
	33	12.5	1	186	186
	34	12.5	2	231	462
	35	12.5	6	1197	7182
	36	12.5	2	1066	2132
	37	12.5	2	259	518
	38	12.5	2	358	716
	39	12.5	2	533	1066
	40	12.5	1	220	220
	41	12.5	1	193	193
	42	12.5	2	593	1186
	43	12.5	1	265	265
	44	12.5	2	942	1884
	45	12.5	1	335	335
	46	12.5	2	1175	2350
	47	12.5	2	561	1162
	48	12.5	3	340	1020
	49	12.5	1	800	800
	50	12.5	4	315	1260
	51	12.5	1	280	280
	52	12.5	1	362	362
	53	12.5	4	1200	4800
	54	12.5	2	497	994
	55	12.5	1	275	275
	56	12.5	2	478	956
	57	12.5	2	207	414
	58	12.5	2	432	864
	59	12.5	2	201	402
	60	12.5	2	325	650
	61	12.5	1	225	225
	62	12.5	2	1116	2232
	63	12.5	2	230	460
	64	16.0	2	232	464
	65	16.0	2	604	1208
	66	16.0	1	200	200
	67	16.0	2	519	1038



Resumo do aço

ACO	DIAM (mm)	C.TOTAL (m)	PESO + 10 % (kg)
CA50	8.0	124.2	53.9
	10.0	137.5	93.2
	12.5	450.8	477.7
	16.0	29.1	90.5
CA60	5.0	758.2	128.5
PESO TOTAL (kg)			
CA50			675.3
CA60			128.5

Volume de concreto (C-25) = 6.58 m³
Área de forma = 105.19 m²

PROJETO ESTRUTURAL

FOLHA

3/4

LOCALIZAÇÃO:
Bairro do Fisgão - Extrema - MG

PROPRIETÁRIO:
Município de Extrema

RESPONSÁVEL TÉCNICO
Juciléia Leandro de Amorim
FOLHA: A1 594 x 841mm
ESCALAS: INDICADAS

DESCRIÇÃO:
Projeto estrutural para construção de Unidade Básica de Saúde no Bairro do Fisgão.

Município de Extrema
CNPJ:18.677.591/0001-00

Juciléia Leandro de Amorim
CREA - MG-287900/LP
ENG. Civil